



Dull Olson Weekes - IBI Group Architects, Inc.
 907 SW Stark Street
 Portland OR 97205 USA
 tel 503 226 6950
 fax 503 273 9192



Meeting Notes

From Karina Ruiz **Date** October 15, 2013
Project Franklin HS Modernization **Project No.** 13-023
Subject Design Advisory Group (DAG) #6
 Franklin HS Library
 October 2, 2013 5:00 – 7:00 PM

INVITEES

(Attendees in Bold)

Project Team

Debbie Pearson, PPS OSM
CJ Sylvester, PPS OSM
 Jim Owens, PPS OSM
Rolando Aquilizan, PPS OSM
 Jenn Sohm, PPS OSM
David Mayne, PPS Communications
Kimm Fox-Middleton, PPS Communications
Karina Ruiz, DOWA-IBI Group
Steve Olson, DOWA-IBI Group
David Johnson, DOWA-IBI Group
Tonie Esteban, DOWA-IBI Group

Shay James, FHS Principal
 Marshall Haskins, FHS Vice Principal
 Ivonne Diblee, FHS Vice Principal
 Dennis Joule, FHS Vice Principal
Steve Mathews, FHS Business Manager

Design Advisory Group (DAG)

Greg Belisle, School Board Representative
Leigh Brown, SPED Representative
Maria Carlsen, Student Representative
 Joyce Gago, Community Representative
 Jeff Hammond, Neighbor & Local Business Rep
Roger Kirchner, Parent Representative
 Pam Knuth, FHS Alumni President
 Heidi Leineweber, Teacher Representative
 Amber McGill, SUN School Representative
Dana Vinger, Teacher Representative
Lisa Zuniga, Parent Representative

Tom Peterson, Bond Accountability Committee
Kevin Spellman, Bond Accountability Comm

7 Members of the Public

SUMMARY

The following is a brief summary of the discussions that took place at this meeting. Action items will be specifically noted.

Guiding Principles and Vision Statements

- Karina reviewed the PPS key Vision themes adopted by the School Board as well as those created by the DAG in previous meetings (see attached).
- These principles will be the guide posts as we move forward in the project and we will return to them to help guide our decision making.



Master Plan Concepts:

- Karina reviewed the master plan concepts developed after the Community Design Workshop (see attached):
- Scheme A – Locates a new athletic complex under the north lawn, a new performing arts center on the corner of 52nd and Woodward, a new STEM/Career Technical Education (CTE) building south of the existing west wing. It also converts the existing auditorium building into the media center and classrooms. The new student commons is located where the old Gym was located with a small portion of the program located in the existing main building quad. The grandstands are relocated to the north side of the field.
 - This scheme locates the athletic facilities directly adjacent to the field, but requires a significant amount of excavation and results in the gym being disconnected vertically from the rest of the building by around 20 feet (see attached site section). This amount of excavation would also be very expensive.
- Scheme C – Locates a new athletic complex west of a reoriented track & field, a new performing arts center on the corner of 52nd and Woodward, a new STEM/CTE building south of the existing west wing. It also converts the existing auditorium building into the media center and classrooms. The new student commons is located where the old Gym was located with a small portion of the program located in the existing main building quad. The grandstands are relocated to the east side of the field.
 - This scheme has increased site costs associated with relocation and reorientation of the track.
- Scheme B – Locates a new athletic complex at the corner of 52nd and Woodward, a new STEM/CTE building south of the existing west wing. It remodels the existing auditorium space and builds new performing and fine arts spaces south of the existing Auditorium building. The new student commons and Media Center are located under the north lawn. The grandstands are relocated to the north side of the field.
- Scheme D – Locates a new STEM/CTE addition to the existing shop building at the corner of 52nd and Woodward, a new athletic complex south of the existing west wing. It remodels the existing auditorium space and remodels and adds to the existing gym building with new performing and fine arts spaces south of the existing Auditorium building. The new student commons and Media Center are located under the north lawn. The grandstands are relocated to the north side of the field.
- Scheme ABD – Locates a new athletic complex at the corner of 52nd and Woodward, a new STEM/CTE building south of the existing west wing. It remodels the existing auditorium space and builds new performing and fine arts spaces south of the existing Auditorium building in the existing Gym building with a new addition. The new student commons and Media Center are located under the north lawn, with a small portion of the commons program located in the existing main building quad. The grandstands are relocated to the north side of the field.

Comments regarding the schemes:

- The group expressed concern that (2) schemes which provide for a new performing arts center were proving to be a struggle due to the costs. Karina indicated that the performing arts space was the most expensive space to build new, but DOWA will continue to explore the possibility of a new PA center. Roger asked what the cost of this space was. Karina indicated that she was reluctant to provide cost information for this specific building, but indicated new theater spaces were around \$450-\$500/SF. This cost typically reflects just the stage, rigging and auditorium spaces and not the entire performing arts complex. Other spaces in that complex (band, choir, green room, fine arts, etc.) are typically much less expensive spaces.
- The group indicated that perhaps the Landers Foundation could provide funding for the performing arts center. The timing of additional funding partnerships and their potential to impact the master plan will need to be reviewed in greater detail.
- There was concern expressed about schemes that located the athletic complex away from outdoor sports venues. The dance and locker rooms would be located in the athletic complex, but there would have to be some team rooms located closer to the fields.

- The consolidation of STEM program was viewed as important. The group indicated that there was a preference for the STEM/CTE building to be located adjacent to the existing science and math classrooms for collaboration purposes.
- A suggestion was made to provide a breezeway circulation along Woodward to connect the SW corner of the site to the rest of the building. The preference would be for this to be a fully enclosed walkway.
- The south side entrance should be functional and attractive. This was more important to the group that maintaining the historic appearance. There may be jurisdictional requirements for the historic elements, but program and function will be taken into consideration.
- Landscape elements should be easy to maintain.
- The intent is to preserve the elegance of the existing buildings while adding new program space.
- In schemes where the media center & commons are located under the north lawn, attention should be given to provide daylight access and views to the north for both programs.
- It is important to provide community access to components such as the gymnasium and library.
- It is important to maintain sun and daylight to curriculum courtyards
- A number of questions were raised relative to the split of Commons/Student Center program shown in several schemes. The program allows for the development of multiple dining options. A café/bistro option would be developed in any entry atrium component while servery food service options would be developed away from the main entry.
- A community member noted that the proposed move of the bleachers to the north side of the existing track could create access issues, but the team stressed that accessibility and safety would be considered in all schemes.
- Proposed locker facility location in the basement of the new gymnasium development at the corner of 52nd and Woodward while providing good proximity for core academic class programs, may be too remote for extracurricular team use. Revisit placement of locker rooms or team rooms in the basement of the existing west wing. The group stated that there is a higher percentage of use for outdoor team use than indoor sports teams.
- Question was raised regarding the possibility of locating classroom program at the corner of 52nd and Woodward in order to promote entry for a higher percentage of students at this main site access point. Currently, only students enrolled in morning shop programs access indoor areas at this point. Master Plan Concepts should recognize the importance of this corner as a main access/entry point for a high percentage of students to core program areas.
- Steve and Dana expressed a preference for the ideas outlined in Scheme B with the addition of the atrium shown in Scheme ABD.
- The group expressed the importance of prioritizing natural light to both the library and student center spaces.

STEM Program Review and Prioritization:

- Karina provided a visual tour of current STEM & Career Technical Education (CTE) trends from recently completed High School projects. Key themes include:
 - Transparency between educational spaces
 - Flexibility of spaces critical as immediate and future use is often unknown
 - Large, lab spaces are often adjacent to lecture and computer design labs for flow from instruction to design to production
 - Utilities need to be provided in flexible configurations
- The District has created several STEM Pathways for the schools to consider. Karina introduced these, but the group wanted more information about other program elements in order to develop an approach to STEM/CTE for FHS.

- Karina provided a quick overview of the elements included in the comprehensive high school program which is still in development. This information will be presented to the DAG in a subsequent meeting.
- Based on the description of the proposed STEM pathways, the group voted on which ones made the most sense to include on the Franklin campus:

	DAG	Community
Engineering/Design/Manufacturing	5	4
Health Sciences	3	3
Technology and Transportation	0	0
Information Technology	5	5

DAG Schedule

- Future DAG and Community meetings are being postponed while the District reviews capacity and program implications. District communications staff will keep the community informed of new dates as soon as these are established.
- The community expressed frustration about not being part of the communication loop. District communication staff outlined their efforts to communicate with the Community through list-serv emails, backpack flyers, social media and robo-calls. Anyone interested in being a part of the process should click on the “get connected” link on the Franklin bond website:
<http://www.pps.k12.or.us/bond/8495.htm>

Rumor Control

- There was concern expressed about the lack of budget information being provided and asked that more budget information about the entire bond be provided. The District indicated that all bond budget and project information was on the bond website.

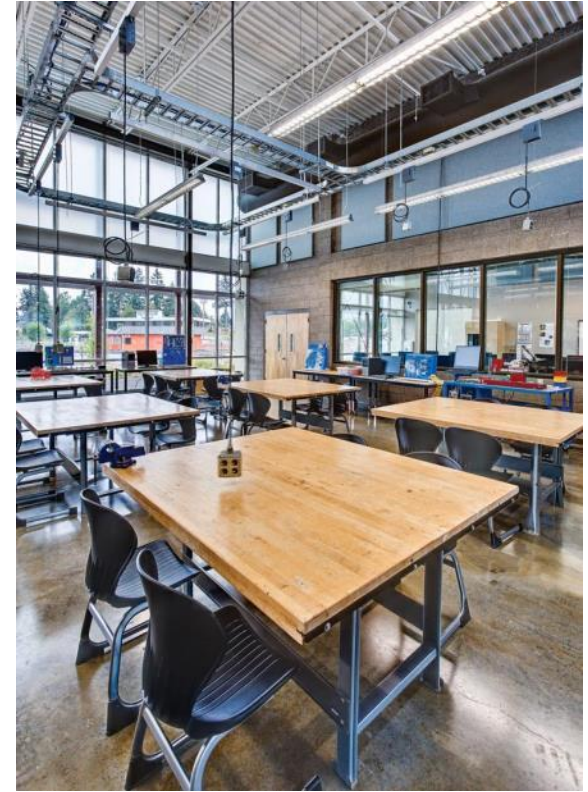
These meeting notes are a record. If there are any errors and/or omissions in the foregoing notes, please advise our office immediately; otherwise these notes will be considered correct and complete as written.

Submitted by,
Dull Olson Weekes – IBI Group Architects Inc.

B. Karina Ruiz, AIA
Associate Principal

Attachments:

<u>Item:</u>	<u>Pages:</u>	<u>Date:</u>
DAG #6 Agenda	1	10/2/13
DAG Presentation	31	10/2/13



Reimagining Franklin



Franklin HS Modernization
Dull Olson Weekes - IBI Group Architects
October 2, 2013

WELCOME AND INTRODUCTIONS

GUIDING PRINCIPLES AND VISIONING REVIEW 5:00 PM

- PPS KEY VISION THEMES
- FRANKLIN GUIDING PRINCIPLES AND KEY CHARACTERISTICS

REVIEW OF MASTERPLAN CONCEPT SCHEMES 5:15 PM

STEM | CTE PROGRAM REVIEW AND PRIORITIZATION 6:00 PM

DAG SCHEDULE 6:30 PM

- FUTURE MEETING INFO
- FUTURE COMMUNITY DESIGN WORKSHOPS

RUMOR CONTROL 6:45 PM

PUBLIC COMMENTS 6:50 PM

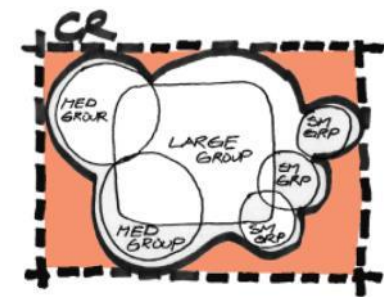
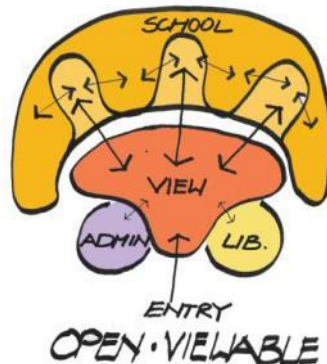
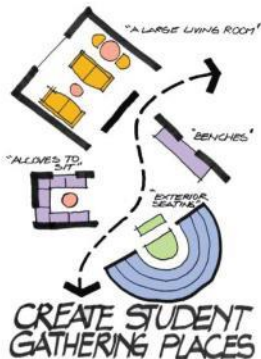
PPS VISIONING KEY THEMES

TEACHING AND LEARNING

- EVERY SCHOOL WILL NURTURE CHILDREN'S INNATE CURIOSITY AND HELP THEM DISCOVER AND SUSTAIN WHAT MOTIVATES THEM TO LEARN.
- EVERY SCHOOL WILL FOCUS ON GIVING STUDENTS THE SKILLS THEY NEED TO BE INDEPENDENT & SELF-DIRECTED LEARNERS.
- THE DISTRICT WILL ENSURE ALL STUDENTS HAVE EQUITABLE OPPORTUNITIES TO SUCCEED & THAT RESOURCES ARE THERE TO MEET THEIR UNIQUE NEEDS.

LEARNING ENVIRONMENTS

- EVERY SCHOOL WILL BE AN INSPIRATION TO ITS STUDENTS, STAFF & COMMUNITY – A VIBRANT & EXCITING PLACE THAT CELEBRATES GROWTH & LEARNING
- EVERY SCHOOL WILL FOSTER THE PERSONAL RELATIONSHIPS CRITICAL TO EFFECTIVE TEACHING & LEARNING BY ENCOURAGING SOCIAL INTERACTION, AS WELL AS COLLABORATION, AMONG & BETWEEN STUDENTS, STAFF & PARENTS
- EVERY BUILDINGS WILL ENABLE TEACHERS TO PROVIDE A WIDE RANGE OF ENGAGING & EFFECTIVE LEARNING EXPERIENCES & ENABLE THE SCHOOL TO ADAPT TO FUTURE CHANGES IN INSTRUCTIONAL PRACTICE.

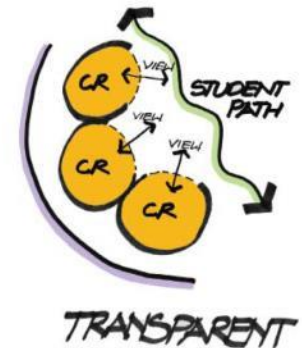
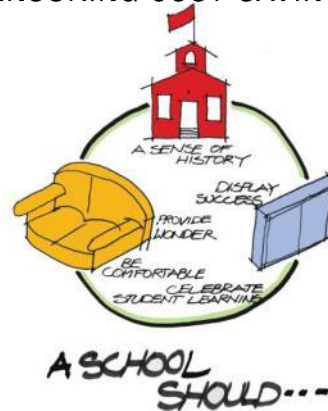
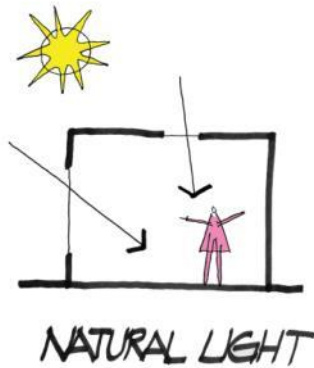
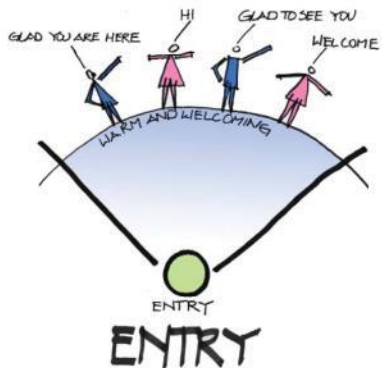


SCHOOL AND COMMUNITY

- EVERY SCHOOL WILL BE THE CENTER OF ITS NEIGHBORHOOD, WELCOMING PEOPLE OF ALL AGES FOR ACTIVITIES THAT REFLECT LOCAL CULTURES, NEEDS & INTERESTS; AND THAT CONTRIBUTE TO AN EXPANDED LEARNING COMMUNITY THAT ENRICHES BOTH THE SCHOOL & THE CITY.
- EVERY SCHOOL WILL OPEN ITS DOORS TO THE MYRIAD LEARNING OPPORTUNITIES OUR CITY OFFERS INVITING PEOPLE IN TO SHARE WHAT THEY KNOW & SENDING STUDENTS OUT TO LEARN BEYOND THE WALLS OF OUR SCHOOLS.
- EVERY SCHOOL WILL SUPPORT COMMUNITY PARTNERSHIPS THAT PROVIDE & SUPPORT THE SERVICES STUDENTS & FAMILIES NEED FOR EXPANDED LEARNING OPPORTUNITIES AND ENSURING THE HEALTH & SAFETY OF OUR STUDENTS

FACILITIES SUPPORT

- EVERY SCHOOL WILL BE A BEACON FOR ITS NEIGHBORHOOD, WHERE INTEGRATED OPERATIONAL SYSTEMS SUPPORT A WELCOMING ENVIRONMENT & DYNAMIC LEARNING EXPERIENCES
- EVERY OPERATIONAL SUPPORT SYSTEM WILL CONTRIBUTE TO SAFEGUARDING THE HEALTH & SAFETY OF THE STUDENTS & ADULTS IN THE SCHOOL.
- DESIGN, SYSTEMS CHOICES AND MATERIAL SELECTION WILL PROVIDE A HEALTHY ENVIRONMENT AND ENABLE SUSTAINABLE OPERATIONS & EFFICIENT MAINTENANCE, ENSURING COST-SAVINGS OVER THE BUILDING'S LIFE.



accessible
education
responsibility
awesome
technology
Teaching
high-school-age
neighborhood
high-quality
supported
student
facilitated
well-maintained
modern
space
encourage
students
class
Emphasis
expression
place
citizenship
creativity
opportunities
work
written
want
social
learning
good
great
performance
STTEAM
FHS
creativity
opportunities
work



We make a high-quality education accessible to every high-school-age student in the neighborhood

STEAM...Teaching and learning is supported and facilitated by modern, well-maintained technology

I want students to think FHS is awesome; that they did not settle for “less than”

Students will feel that FHS offers an exceptional education to ALL students through rigorous course offerings in a state of the art facility



State-of-the-art Performing Arts Center

Media Center that is both a Hub and a Quiet Place of Study

Designated Space for Students

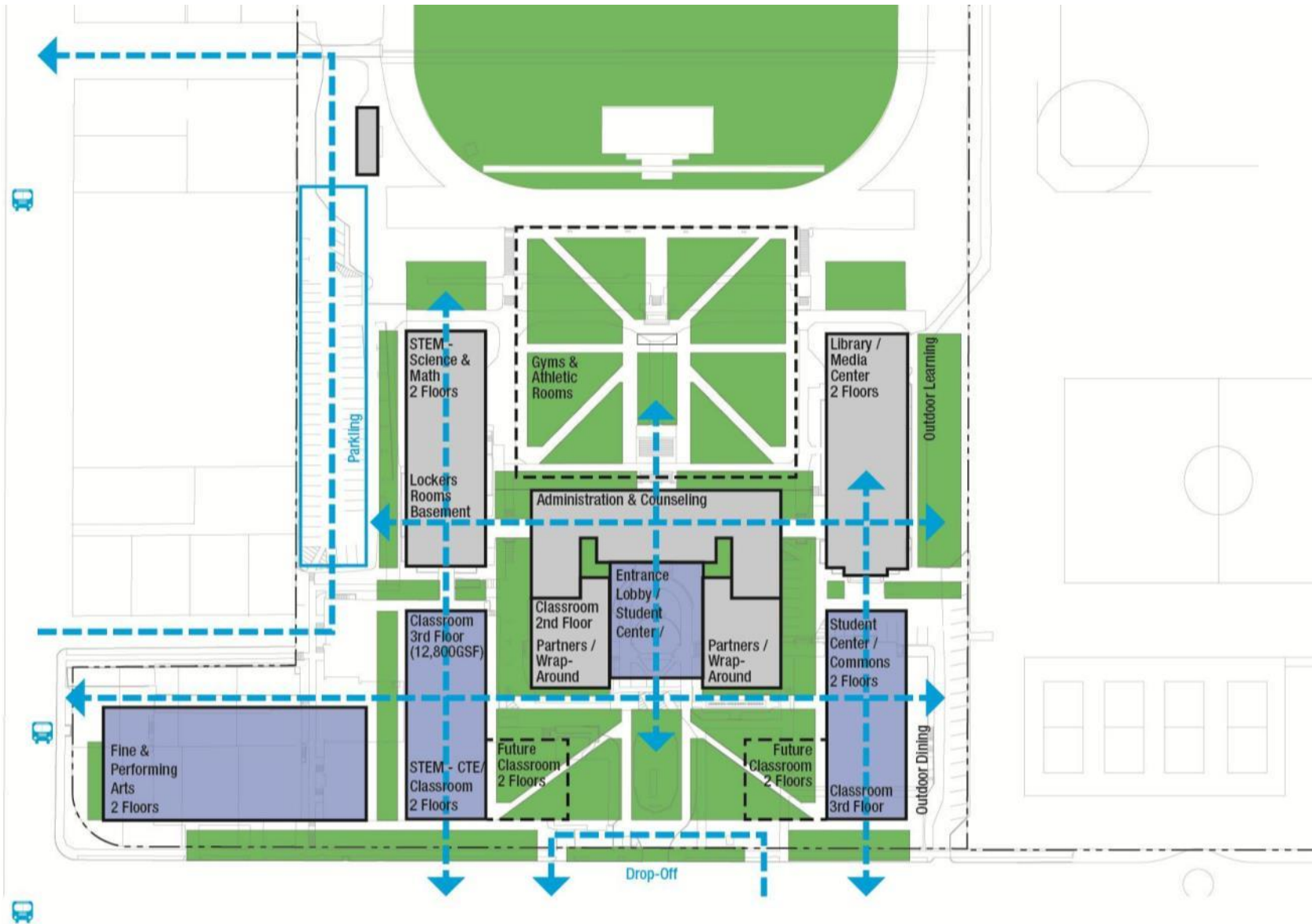
Open Communal Spaces

Natural Light



MASTER PLAN CONCEPTS

A



Dull Olson Weekes – IBI Group Architects
Portland Public Schools – Franklin HS Modernization

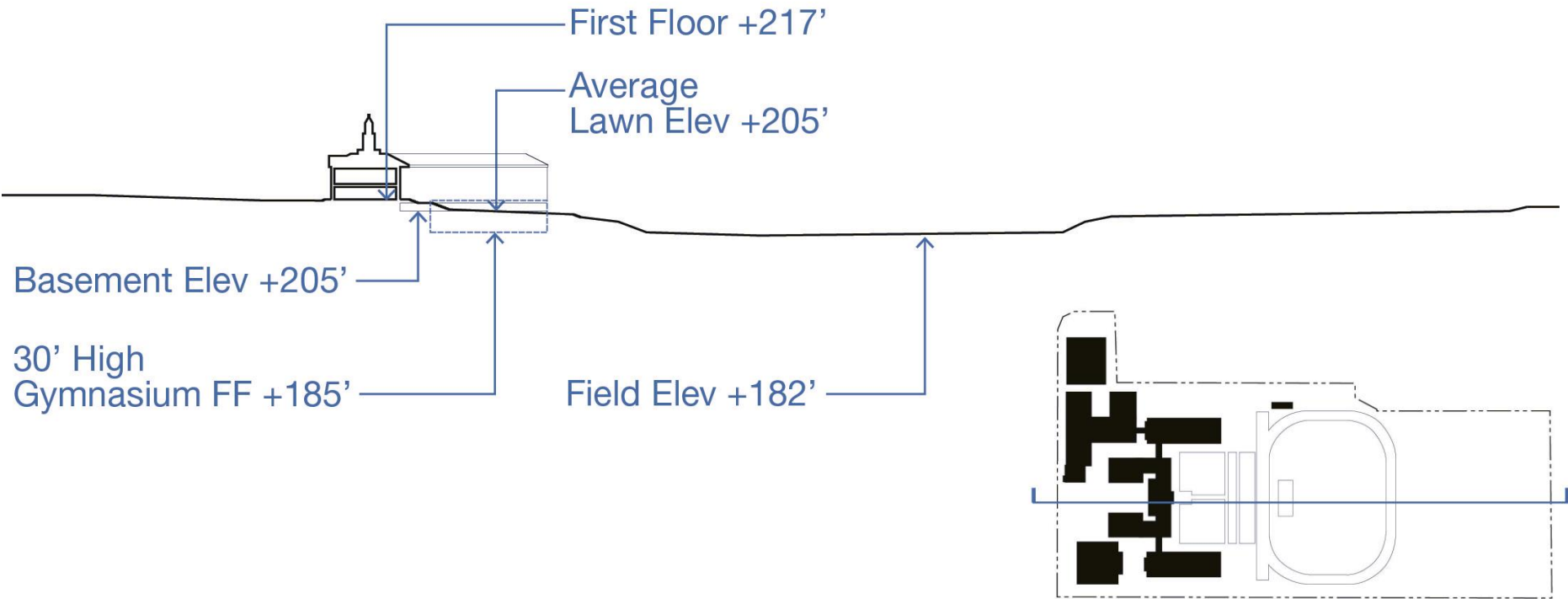
Reimagining Franklin HS: 21st Century Learning in an Historic Building
October 2, 2013



Site Section

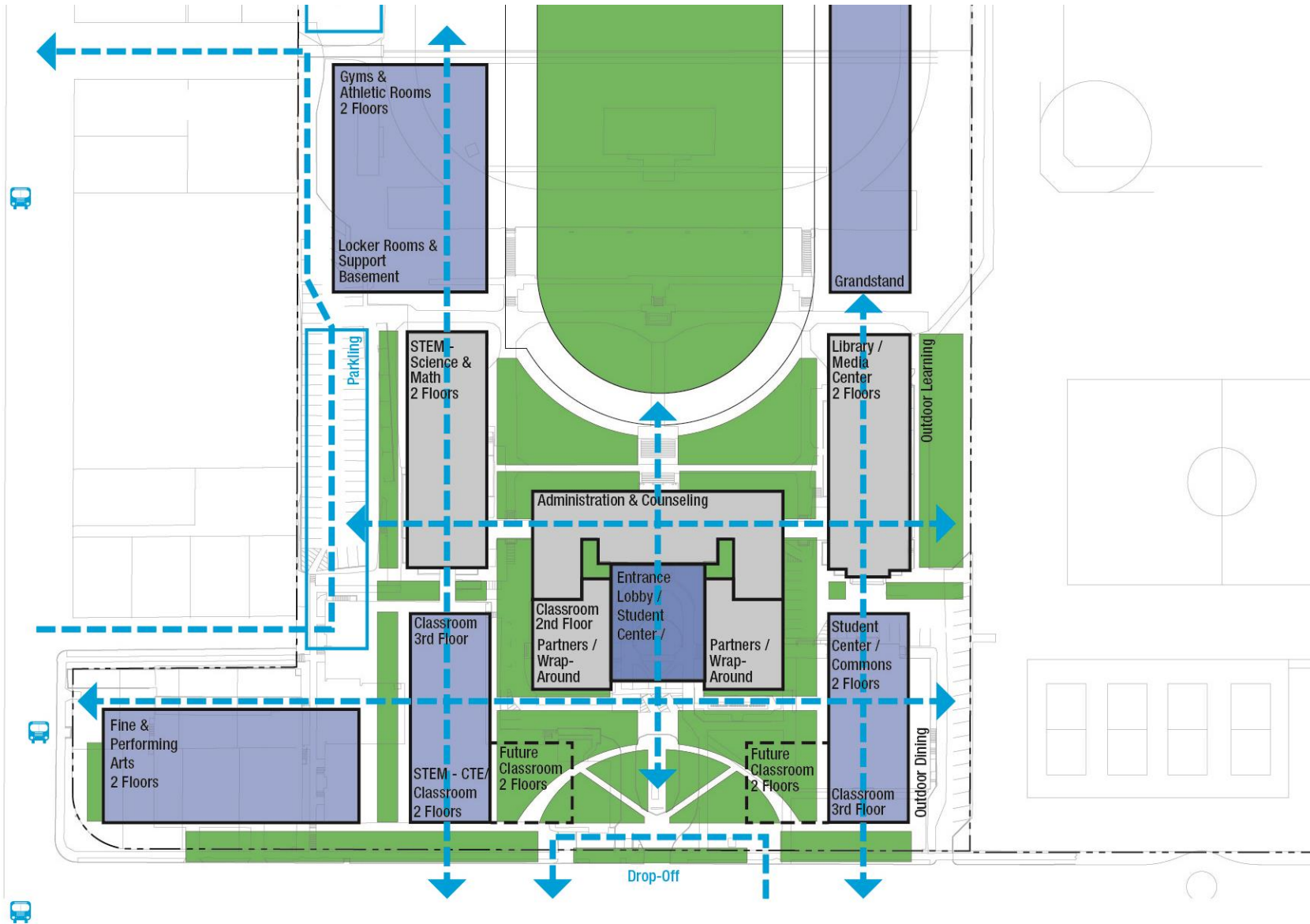
Approximate
Woodward Avenue
Elev +220'

Approximate
Division Street
Elev +208'



MASTER PLAN CONCEPTS

C



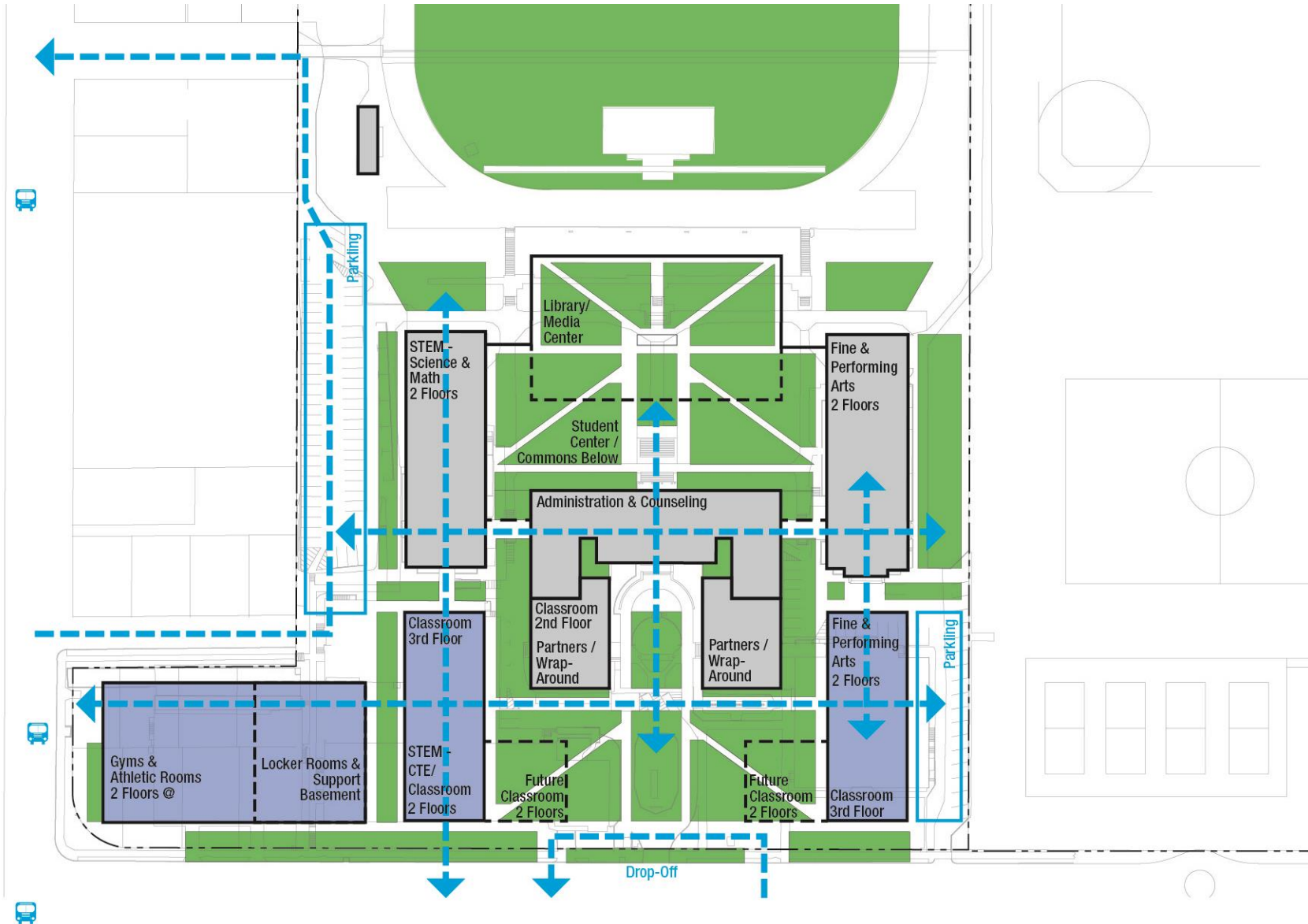
Dull Olson Weekes – IBI Group Architects
Portland Public Schools – Franklin HS Modernization

Reimagining Franklin HS: 21st Century Learning in an Historic Building
October 2, 2013



MASTER PLAN CONCEPTS

B

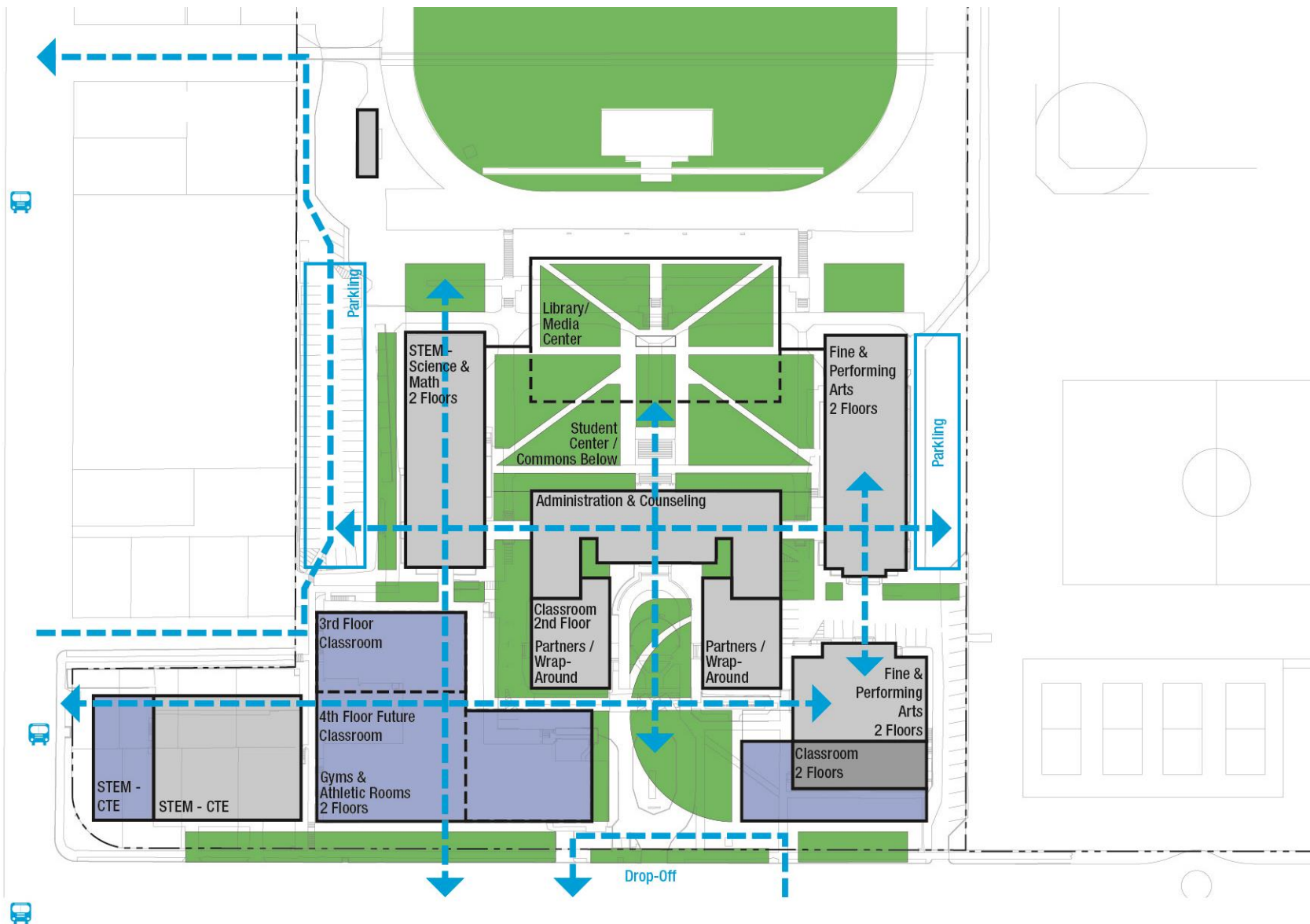


Dull Olson Weekes – IBI Group Architects
Portland Public Schools – Franklin HS Modernization

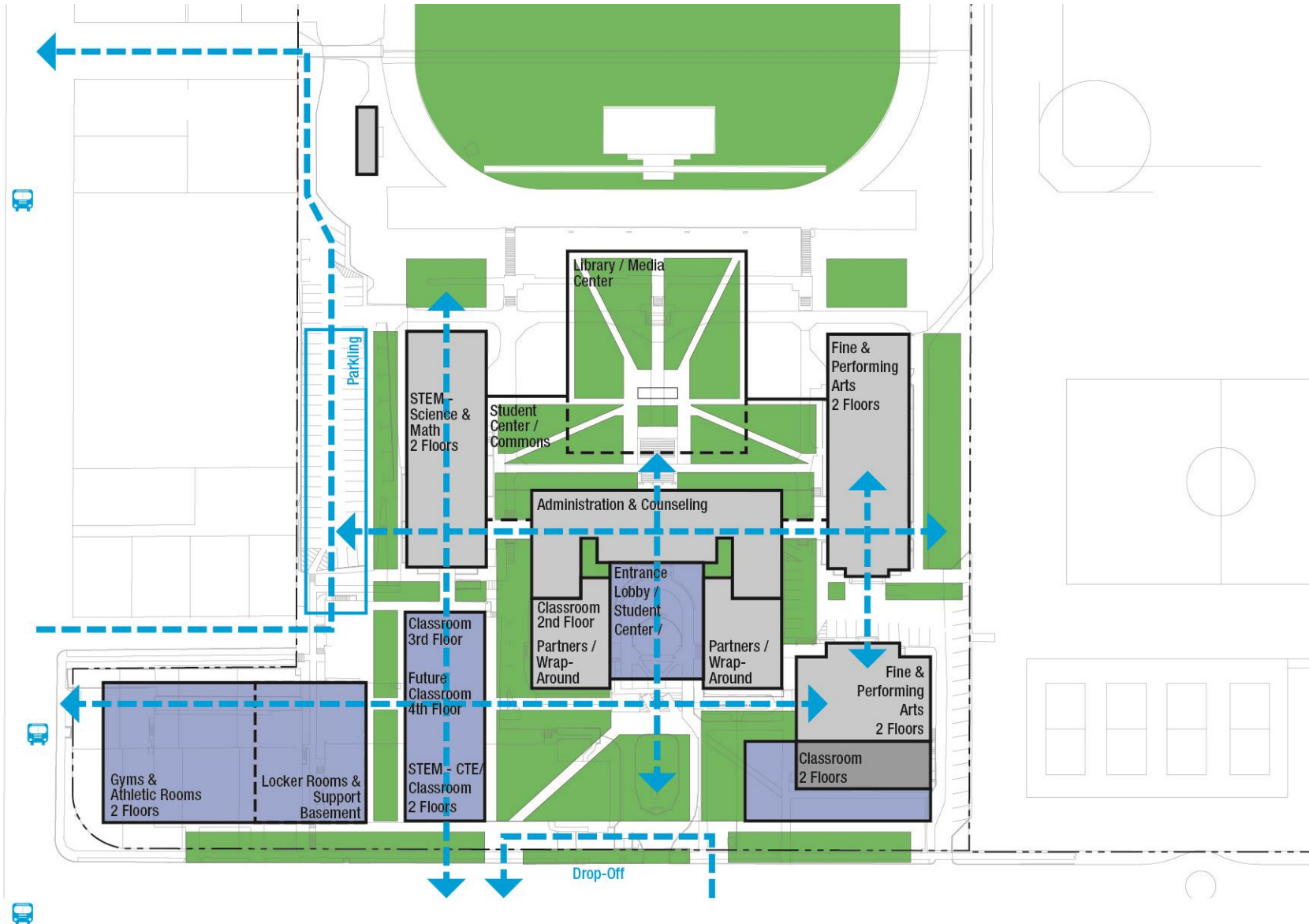
Reimagining Franklin HS: 21st Century Learning in an Historic Building
October 2, 2013



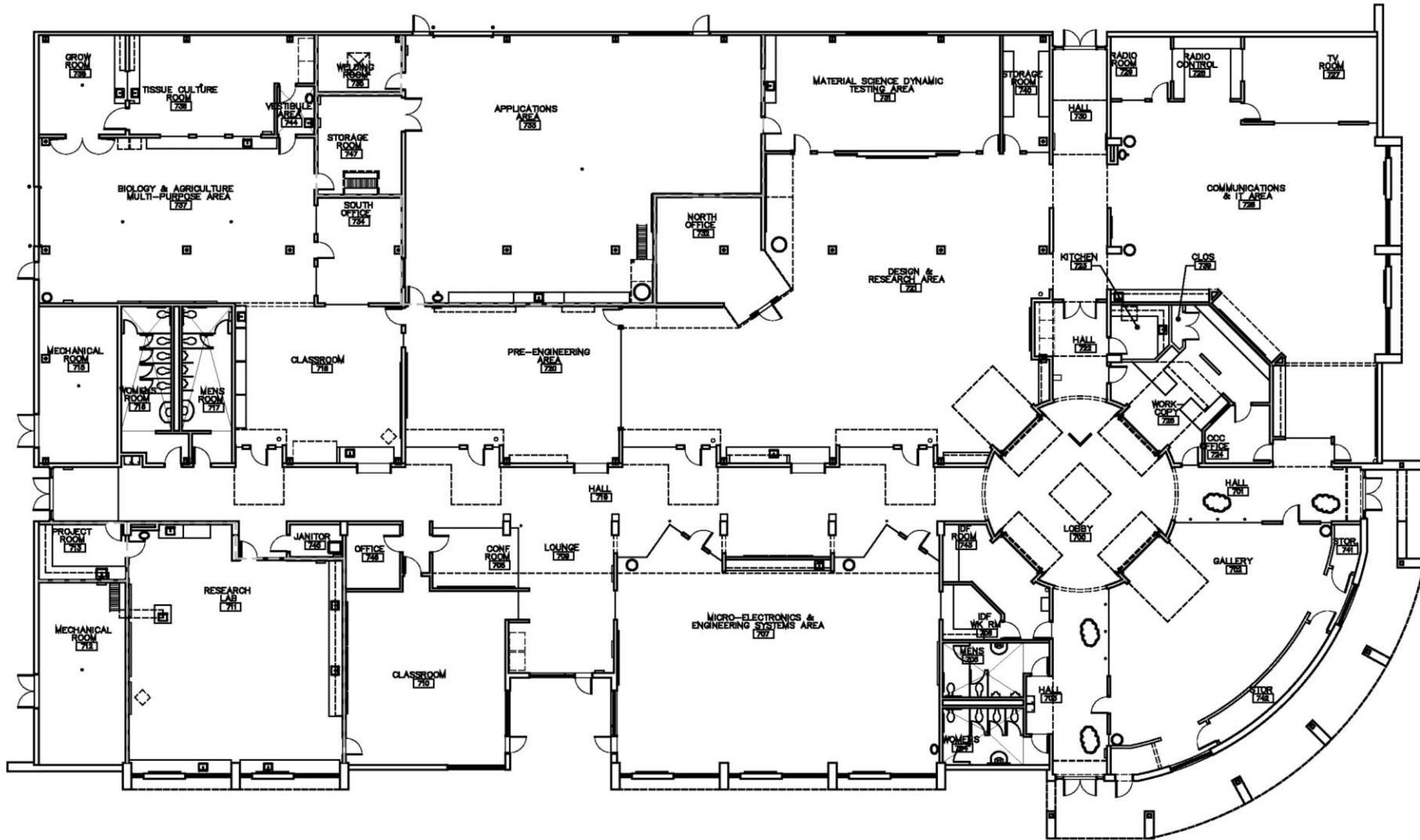
D



ABD



STEM | CTE – VIRTUAL TOUR



Dull Olson Weekes – IBI Group Architects
Portland Public Schools – Franklin HS Modernization

Reimagining Franklin HS: 21st Century Learning in an Historic Building
October 2, 2013



STEM | CTE – VIRTUAL TOUR



Dull Olson Weekes – IBI Group Architects
Portland Public Schools – Franklin HS Modernization

Reimagining Franklin HS: 21st Century Learning in an Historic Building
October 2, 2013



STEM | CTE – VIRTUAL TOUR



Dull Olson Weekes – IBI Group Architects
Portland Public Schools – Franklin HS Modernization

Reimagining Franklin HS: 21st Century Learning in an Historic Building
October 2, 2013





Dull Olson Weekes – IBI Group Architects
Portland Public Schools – Franklin HS Modernization

Reimagining Franklin HS: 21st Century Learning in an Historic Building
October 2, 2013





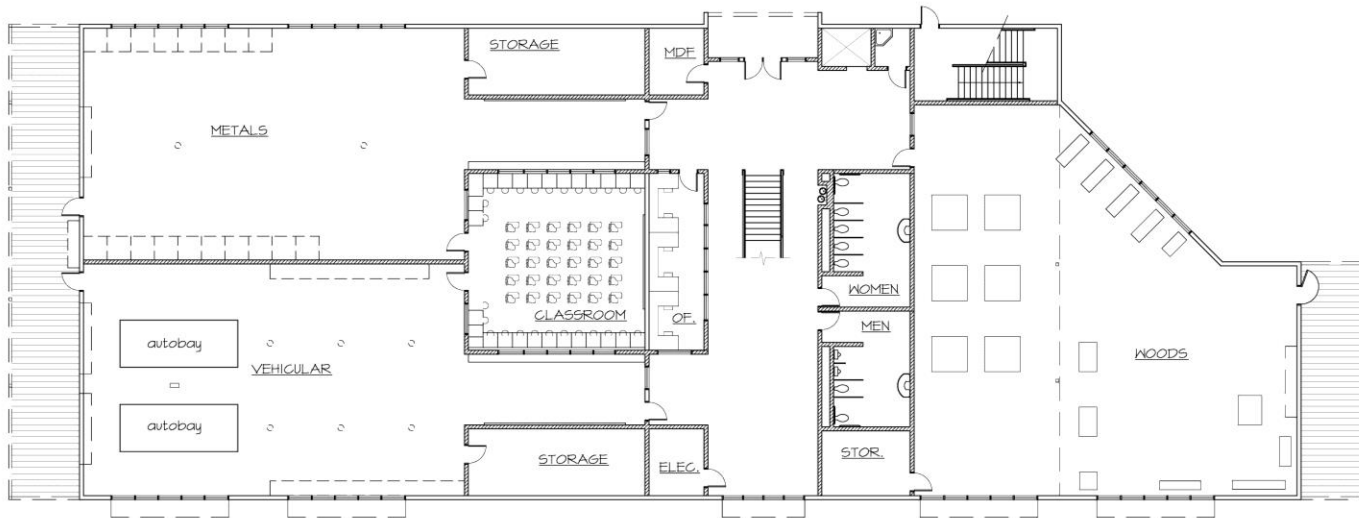
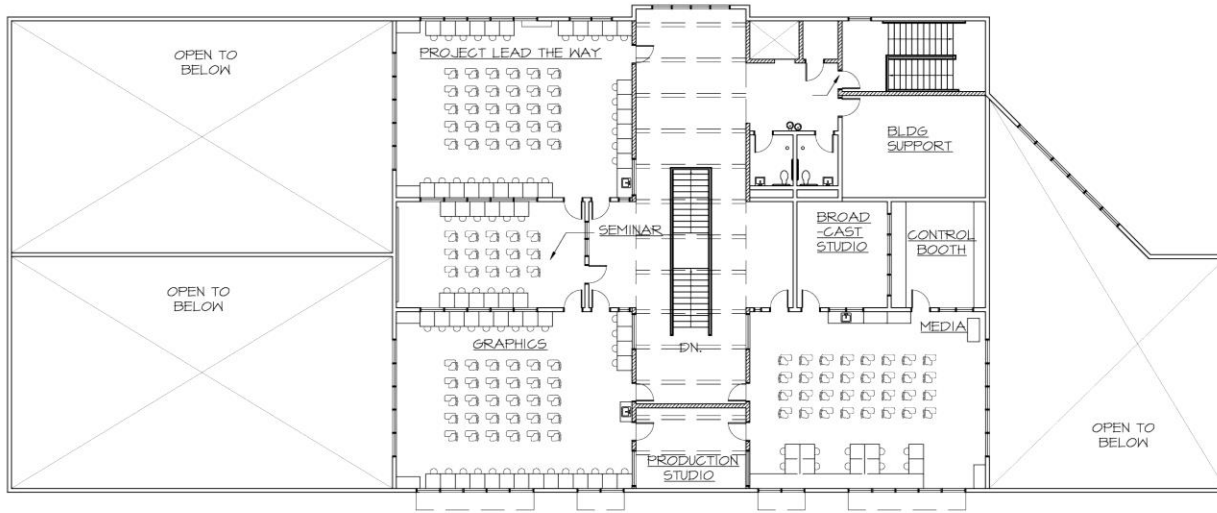
STEM | CTE – VIRTUAL TOUR



Dull Olson Weekes – IBI Group Architects
Portland Public Schools – Franklin HS Modernization

Reimagining Franklin HS: 21st Century Learning in an Historic Building
October 2, 2013





STEM | CTE – VIRTUAL TOUR

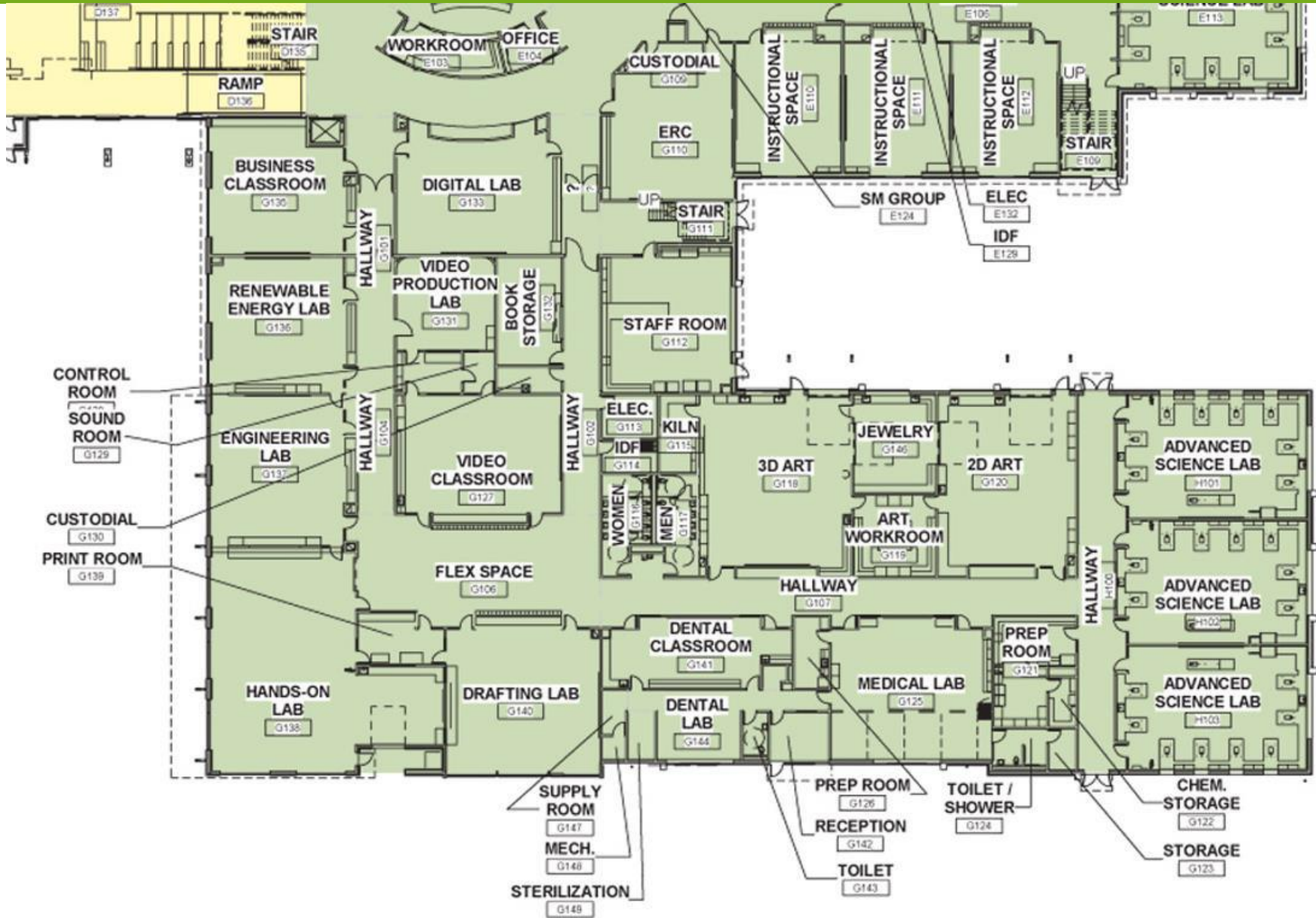


Dull Olson Weekes – IBI Group Architects
Portland Public Schools – Franklin HS Modernization

Reimagining Franklin HS: 21st Century Learning in an Historic Building
October 2, 2013



STEM | CTE – VIRTUAL TOUR



Dull Olson Weekes – IBI Group Architects
 Portland Public Schools – Franklin HS Modernization

Reimagining Franklin HS: 21st Century Learning in an Historic Building
 October 2, 2013







Dull Olson Weekes – IBI Group Architects
Portland Public Schools – Franklin HS Modernization

Reimagining Franklin HS: 21st Century Learning in an Historic Building
October 2, 2013



STEM | CTE – VIRTUAL TOUR



Dull Olson Weekes – IBI Group Architects
Portland Public Schools – Franklin HS Modernization

Reimagining Franklin HS: 21st Century Learning in an Historic Building
October 2, 2013



General STEM spaces - applicable to all STEM focus types depending on partner(s) and program needs

Computer lab with 3D printer

Lecture Hall

Small group work space

Project Display

Robotics with work stations

Engineering & Design/Construction or Manufacturing (higher ed, local industry partner(s))

STEM Lab – Woods, Metal Fabrication, Welding

Science - AP Physics

Math - AP Calculus

Intro to Engineering

Alternative energy

Health Sciences / Biomedical (university or research partner(s))

Sports Medicine

Health

Anatomy

AP Physiology

AP Chemistry

STEM Lab - biotechnology

Automotive Services Technology or Transportation, Distribution and Logistics (higher ed., industry partner(s))

Small Engines Lab

Electronic Trades

Mechanic

Aviation

Sustainable transportation

Information Technology Studies (technology partner(s))

Computer labs (3)

Software engineering

Web and digital communications lab